

FOREWORD

To be added

CONTENTS PAGE

To be added

1. Introduction

- 1.1. The Planning and Compulsory Purchase Act 2004 (2004 Act) introduced major changes to the development plan system. These changes include the replacement of Local Plans with a system of **Local Development Documents** (LDD) that collectively form a portfolio of planning policies and proposals called a **Local Development Framework** (LDF).
- 1.2. This Local Development Scheme (LDS) identifies the Local Development Documents (LDDs) prioritised for production by Wiltshire Council and sets out a timetable for their delivery over the next three years. The LDS is not in itself a planning policy. Instead, it sets out what work will be undertaken to review existing planning policies and produce new ones for the future.
- 1.3. The first LDS was approved by the Implementation Executive¹ of Wiltshire Council in January 2009 and related to the period 2009-2012. It brought together the work already undertaken by the former authorities of Kennet, North Wiltshire, Salisbury, West Wiltshire and Wiltshire County Council.
- 1.4. In preparing the Wiltshire LDS 2011-2014, the priorities and timetables set out in the first Wiltshire LDS have been reappraised. The focus is on the delivery of a consolidated **Wiltshire Core Strategy** (excluding minerals and waste matters), in order to have in place consistent policy across Wiltshire as early as possible. The **South Wiltshire Core Strategy** relating to the former Salisbury district area is well advanced (Inspector's report produced) and its completion will enable new housing sites to be identified before the Wiltshire Core Strategy is in place and a five year housing land supply to be maintained in this part of Wiltshire. The policies and proposals within the South Wiltshire Core Strategy will be subsumed into the Wiltshire Core Strategy and be replaced by the Wiltshire Core Strategy when it is adopted.
- 1.5. In addition to the Wiltshire Core Strategy, the LDS provides for the completion of the **Wiltshire and Swindon Minerals and Waste Site Allocation DPDs**. These documents are produced in partnership with the adjoining local authority of Swindon Borough Council, they are well advanced and once completed will

¹ The Implementation Executive was the body of elected Councillors responsible for the creation of the new Council. It was drawn from all the previous district and county councils in Wiltshire (17 in total and included representation from all political parties).

provide a full suite of documents in relation to minerals and waste matters in Wiltshire and Swindon.

- 1.6. The LDS also provides for the completion of a **Gypsy and Travellers Site Allocations DPD** to ensure that the accommodation needs of Gypsies and Travellers are provided for in the county.
- 1.7. The emerging Wiltshire Core Strategy also identifies other planning policy documents that may need to be prepared in order to provide the full suite of documents to replace the saved local plan policies.
- 1.8. The Localism Bill (due to be enacted spring 2012) will revoke regional spatial strategies and introduce neighbourhood plans, neighbourhood development orders and the community right to build. The Government has also consulted on a draft National Planning Policy Framework (NPPF), which may have implications for the LDS once approved.
- 1.9. At this stage the LDS includes pilot projects for neighbourhood planning being undertaken in Wiltshire (see paragraph 2.7) and a process for developing a neighbourhood planning protocol once the Localism Bill is enacted. The LDS will need to be reviewed once the full implications of the Localism Bill are known.

2. Schedules of planning policy documents

Existing local development documents and development plan documents

- 2.1. Policies within the documents listed in Table 1 currently form part of the development plan. A list of 'saved' local plan policies is provided at **Appendix A**.

Table 1: Existing local development documents and development plan documents

Document	Area covered	Status
Statement of Community Involvement LDD (adopted February 2010)	Wiltshire council area	Sets out the process and methods for community involvement for different types of LDDs and for different stages of the plan preparation.
Wiltshire and Swindon Waste Development Control Policies DPD (adopted September 2009)	Wiltshire council area and Swindon borough	Current policy. Sets out generic policies to assist in determining planning applications for waste development up to 2026, subject to monitoring and review.
Wiltshire and Swindon Minerals Development Control Policies DPD (adopted September 2009)	Wiltshire council area and Swindon borough	Current policy. Sets out generic policies to assist in determining planning applications for minerals development up to 2026, subject to monitoring and review.
Wiltshire and Swindon Waste	Wiltshire council area and Swindon	Current policy. Sets out the spatial vision, strategic objectives and strategy covering

Core Strategy (adopted July 2009)	borough	waste provision up to 2026 including the strategic policies and proposals to deliver the vision.
Wiltshire and Swindon Minerals Core Strategy (adopted July 2009)	Wiltshire council area and Swindon borough	Current policy. Sets out the spatial vision, strategic objectives and strategy covering minerals provision up to 2026 including the strategic policies and proposals to deliver the vision.
West Wiltshire Leisure and Recreation DPD (adopted February 2009)	Former West Wiltshire district area	Provides additional recreational policies for the west Wiltshire area for the period up until 2016. This DPD will be replaced by policies in future Wiltshire-wide DPDs, including the Wiltshire Core Strategy.
Wiltshire and Swindon Structure Plan 2016 (adopted April 2006)	Wiltshire council area and Swindon borough	Certain policies have been 'saved' until replaced by policies in a new DPD, particularly the Wiltshire Core Strategy (see Appendix A).
North Wiltshire Local Plan (adopted April 2006)	Former North Wiltshire district	Certain policies have been 'saved' until replaced by policies in a new DPD, particularly the Wiltshire Core Strategy (see Appendix A).
Kennet Local Plan 2011 (adopted June 2004)	Former Kennet district	Certain policies were 'saved' on 26 th September 2007 and will remain in place until replaced by policies in a new DPD, particularly the Wiltshire Core Strategy (see Appendix A).
West Wiltshire District Plan First Alteration 2011 (adopted June 2004)	Former West Wiltshire district	Certain policies were 'saved' in September 2007 and will remain in place until replaced by policies in a new DPD, particularly the Wiltshire Core Strategy (see Appendix A).
Salisbury District Plan 2011 (adopted June 2003)	Former Salisbury district	Certain policies 'saved' in September 2007 and will remain in place until replaced by policies in a new DPD, particularly the South Wiltshire Core Strategy and Wiltshire Core Strategy (see Appendix A).

2.2. There are also a considerable number of Supplementary Planning Documents (SPDs) that support policies within the documents listed in Table 1 that will continue to be in place. Some were prepared before September 2004 and are referred to as Supplementary Planning Guidance. These are listed in **Appendix A**.

New local development documents

2.3. A number of development plan documents are currently in preparation and will be adopted by the Council in the period to 2014. These are summarised in Table 2 with more detailed information contained in **Appendix B**. A summary of the overall programme is in Section 3.

Table 2: New development plan documents

Document	Area covered	Anticipated adoption date	Comments
South Wiltshire Core Strategy DPD	Former Salisbury district area	February 2011	Sets out the spatial vision, objectives and strategy for the spatial development of the former Salisbury district area and strategic policies and proposals to deliver the vision; including strategic land allocations. Will be subsumed into the Wiltshire Core Strategy
Wiltshire Core Strategy DPD	Wiltshire council area	December 2012 (to be in conformity with national planning policies)	Sets out the spatial vision, objectives and strategy for the spatial development of Wiltshire and strategic policies and proposals to deliver the vision; including strategic site allocations for the period to 2026.
Wiltshire and Swindon Waste Site Allocations DPD	Wiltshire county and Swindon borough	November 2012 (to be in conformity with Waste Core Strategy)	Identifies land for future waste management facilities and aggregate recycling facilities up to 2026 in accordance with the Swindon and Wiltshire Waste Core Strategy.
Wiltshire and Swindon Minerals Site Allocations DPD	Wiltshire county and Swindon borough	December 2012 (to be in conformity with Minerals Core Strategy)	Identifies land for future mineral (aggregates) working and aggregate recycling facilities up to 2026 in accordance with the Swindon and Wiltshire Minerals Core Strategy.
Gypsy and Traveller Site allocations DPD	Wiltshire Council area	February 2014 (to be in conformity with Wiltshire Core Strategy)	Will set out site allocations to provide for the accommodation needs of Gypsies and Travellers.

Future Policy Development

Supporting the Wiltshire Core Strategy

2.4. The Council's overall priority is to focus on delivery of the Wiltshire Core Strategy as soon as is reasonably possible. To support the production and implementation of the core strategy there are a number of priority projects to be completed in tandem with the core strategy. These are:

- (i) Infrastructure Delivery Plan - to set out detailed guidance on what infrastructure will need to be provided to support development.
- (ii) Community Infrastructure Levy² - to set out the type and scale of contributions that will be required to build the infrastructure to support development based on the Infrastructure Delivery Plan and Wiltshire Core Strategy.

² The Community Infrastructure Levy (CIL) is a charge which local authorities in England and Wales are empowered, but not required, to charge on most types of new development in their area. CIL charges are based on simple formulae which relate the size of the charge to the size and character of the development

- (iii) Wiltshire Green Infrastructure Strategy - to set out a strategic Wiltshire-wide green infrastructure network that will comprise of both new and existing green spaces; walking, cycling and horse riding routes; parks, recreational spaces and play areas; water courses and water bodies; areas of high biodiversity value; and access and wildlife corridors such as inland waterways and rivers.
- (iv) Affordable Housing Supplementary Planning Document - to set out detailed guidance on the interpretation and implementation of affordable housing policies in the core strategy.

Additional development plan documents

2.5. Emerging policy in the Wiltshire core strategy also anticipates the possible need for two additional DPDs to follow on from the adoption of the core strategy.

- Site Allocations DPD - the Wiltshire core strategy provides the context for the scale of growth in each community area but is not specific in every community about the location of growth. In these community areas, the core strategy allows for sites to be identified through neighbourhood plans in line with the provisions of the Localism Bill. However, where neighbourhood plans are not forthcoming and if the supply of land for housing begins to decline there may be a case for Wiltshire Council to step in and produce a Site Allocations DPD.
- Development Management DPD - the Wiltshire Core Strategy is being prepared during a period of change in the planning system. A National Planning Policy Framework (NPPF) is being prepared to replace many of the existing national planning policy guidance notes (PPGs) and planning policy statements (PPSs). Local planning authorities were encouraged not to include policies in their development plan that duplicated national policy addressed in PPGs and PPSs. Once the NPPF is in its final format it will become clear whether other new local development management policies need to be developed because they are no longer addressed through national policy and were not included in the Wiltshire Core Strategy. At this point a Development Management DPD may need to be prepared.

Other planning guidance post Wiltshire core strategy

2.6. It will also be important to produce additional planning policy once capacity and resources become available to have in place the full suite of documents that are required to fully replace the saved policies from the former District Local Plans and associated supplementary guidance to provide consistent policy across Wiltshire. Given that any subsequent DPDs and SPDs must conform to the Wiltshire Core Strategy, the Core Strategy needs to be far enough advanced so that any future documents can be prepared in accordance with it. The emerging core strategy for Wiltshire (Wiltshire Core Strategy Consultation Document, June 2011) refers to a number of additional guidance notes that may

be needed to support the core strategy and replace existing SPD that support older saved local plan policies, as follows:

- (i) planning obligations and the role of section 106 agreements
- (ii) design and local distinctiveness in Wiltshire
- (iii) a Wiltshire landscape strategy which would involve consolidating existing landscape character assessment, reviewing special landscape areas and preparing developer guidance
- (iv) areas of special historic environmental significance
- (v) the Stonehenge and Avebury World Heritage Site
- (vi) travel plans
- (vii) town centres
- (viii) village boundaries
- (ix) biodiversity to include the mechanisms to address HRA issues, biodiversity offsetting and developer guidance

Other planning guidance being prepared

- 2.7. Work has been progressing on a Devizes Wharf Planning Brief Supplementary Planning Document since June 2010. During the summer 2011 a draft version of the brief was published for consultation. The comments received during that consultation are being analysed and Wiltshire Council will proceed with the planning brief through to adoption as a supplementary planning document early 2012.

Neighbourhood plans

- 2.8. This LDS is being prepared during a period of change to the planning system. The Localism Bill (due to be enacted Spring 2012) will remove regional spatial strategies from the development plan and introduce a new tier of planning at the neighbourhood level. These plans can be in the form of a neighbourhood plan, a neighbourhood development order or a community right to build. This LDS anticipates that the priority for the Council, once the core strategy is well advanced, will be to support the preparation of these plans and others. Four pilot projects are being undertaken in Wiltshire to better understand planning at the neighbourhood level and help develop a Neighbourhood Planning Protocol for Wiltshire. These are listed below:

- (i) Malmesbury neighbourhood plan
- (ii) Sherston neighbourhood plan
- (iii) Wootton Bassett and Cricklade community area neighbourhood plan
- (iv) Warminster local development order

- 2.9. The Government has consulted on a draft NPPF, which will supersede many planning policy statements, planning policy guidance and some Circulars. This may change the current understanding of additional plans and guidance needed in the county to support sustainable and appropriate development. This LDS will, therefore, be reviewed in six to nine months time once the NPPF is in its final form and Localism Bill enacted to consider the implications of the changes to the planning system on the programme of work currently proposed.

Annual Monitoring Report

- 2.10. Annual Monitoring Reports (AMR) form part of the LDF and have been published for Wiltshire at the end of each calendar year since 2008. The AMR monitors and reviews how well the Council has performed against the timetable set out in the LDS and any changes needed to maintain an up to date LDS. The role of the AMR is also to monitor the effectiveness of the policies included in each DPD.
- 2.11. The Localism Bill contains provisions to remove the requirement to submit the AMR to the Secretary of State for approval; it does not contain provisions to remove the need for an AMR. In anticipation of the Bill, in March 2011, the Government withdrew guidance on local plan monitoring contained in 'Local development framework monitoring: a good practice guide' (ODPM 2005) and other guidance contained in 'Frequently Asked Questions' and emerging best practice notes. It is now for each council to decide what should be included in their AMR while ensuring that they are prepared in accordance with UK and EU legislation³. Wiltshire Council intends to continue to produce an AMR annually.

3. Overall programme for local development document preparation

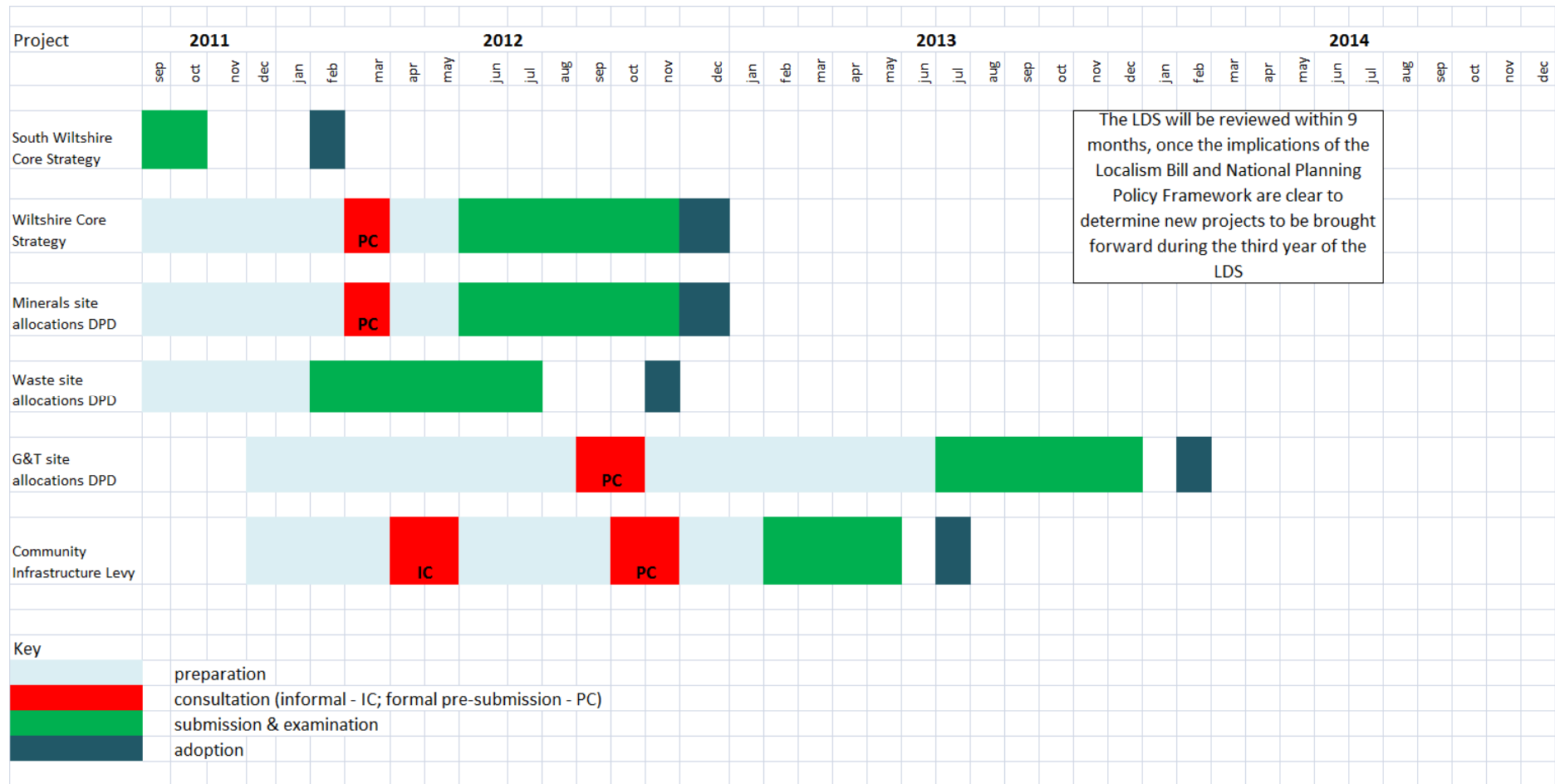
- 3.1. The overall programme for preparation of the new LDDs listed at Table 2 (paragraph 2.3) above including key milestones is summarised in the following chart. Significant progress has already been made on the delivery of a number of these documents and accordingly only the later stages of preparation may be shown. Each DPD document follows a similar process:

- (i) Preparation and evidence gathering (P)
- (ii) Initial issues and options consultation (C)
- (iii) Further preparation, evidence gathering and responding to comments (P)
- (iv) Pre-submission consultation (i.e. before submission to the Secretary of State)(PC)
- (v) Submission to the Secretary of State (S)
- (vi) Period for examination by Inspector and receipt of Inspectors report (E)
- (vii) Adoption (A)

The key milestone for each document is the point at which the document is submitted to the Secretary of State. Critical to maintaining progress in relation to each document is the role of Cabinet and Full Council. Cabinet provide Member approval to progress to each stage of plan preparation and authorise consultation procedures. Full Council are required to approve the DPD for submission to the Secretary of State and finally adopt the plan as per the Council constitution. Provisions have been made in the LDS to enable Full Council to also approve the pre-submission consultation draft.

³ Letter to chief planning officers on preparation and monitoring of local plans, March 2011

CHART 1 : Programme for development plan production



The LDS will be reviewed within 9 months, once the implications of the Localism Bill and National Planning Policy Framework are clear to determine new projects to be brought forward during the third year of the LDS

4. Supporting statement

- 4.1. The Government expects local authorities to use effective programme management techniques in progressing delivery of the LDF and producing the evidence base. This supporting statement explains what arrangements are being made to ensure delivery of the programme set out on the previous pages in terms of:
- (i) the development of a sound and robust evidence base;
 - (ii) the approach to community and stakeholder engagement;
 - (iii) sustainability appraisal (SA) and strategic environmental assessment (SEA);
 - (iv) resources;
 - (v) review and monitoring; and
 - (vi) risk assessment

Evidence base

- 4.2. The strategies, policies and proposals in the LDF must be founded on a robust and organic evidence base. A considerable amount of data is available at a national level and a number of pieces of bespoke research have been carried out or commissioned by Wiltshire Council to gather local evidence. For example, to support the Wiltshire Core Strategy Consultation Document a number of topic papers were prepared which collectively summarise the evidence available at the time of the consultation document's publication. These draw upon existing published documents and comments received during consultation at earlier stages of the plan's preparation. They are available on the Council's web site (<http://www.wiltshire.gov.uk/planninganddevelopment/planningpolicy/wiltshirecorestrategy/wcsconsult2011.htm>) and will be up dated and republished to accompany the submission draft of the core strategy.
- 4.3. The south Wiltshire core strategy is at an advanced stage of preparation with the Inspector's report received during October 2011. The minerals and waste site allocations DPDs are also well advanced with submission to the Secretary of State anticipated in the New Year. All three documents have been subject to extensive consultation and collation of evidence at all stages in the plan's preparation has taken place. Details of the evidence prepared to support these documents are available on the web site. <http://www.wiltshire.gov.uk/planninganddevelopment/planningpolicy/southwiltshirecorestrategy.htm> and <http://www.wiltshire.gov.uk/planninganddevelopment/planningpolicy/mineralsandwastepolicy/aggregatemineralssiteallocations.htm> and [http://www.wiltshire.gov.uk/planninganddevelopment/planningpolicy/mineralsandwastesiteallocations.htm](http://www.wiltshire.gov.uk/planninganddevelopment/planningpolicy/mineralsandwastepolicy/wastesiteallocations.htm)
- 4.4. There are also a number of subject specific pieces of commissioned research to support the DPDs also available on the Council's web site (<http://www.wiltshire.gov.uk/planninganddevelopment/planningpolicy/planningpolicyevidencebase.htm>). By way of example, completed key studies and studies in progress to support the Wiltshire Core Strategy are summarised in Table 3, below.

Table 3: Wiltshire LDF evidence base

Document	Date complete/anticipated
Business and employment evidence	
Wiltshire town centre and retail study	March 2011
Future employment needs in Wiltshire	April 2011
Wiltshire workspace strategy	August 2009
Wiltshire workspace strategy, phase 2	Anticipated October 2011
Employment land monitoring report, April 2011	Anticipated March 2012
Housing evidence	
Housing Land Availability Report 2010	April 2010
West of Swindon Study	April 2009
Strategic housing land availability assessment: east, north and west Wiltshire	March 2008
Strategic housing land availability assessment: south Wiltshire	May 2009
Wiltshire strategic housing land availability assessment update	Anticipated November 2011
Wiltshire strategic housing market assessment	Anticipated December 2011
Viability Study	Anticipated December 2011
Housing land availability report 2011	Anticipated November 2011
Housing land supply statement 2011	Anticipated December 2011
Environmental evidence	
Wiltshire LDF sustainability appraisal	April 2009
Wiltshire sustainable energy planning study	January 2011
Wiltshire core strategy habitats regulation assessment	October 2009
Wiltshire strategic flood risk assessment, level 1	June 2009
Wiltshire landscape character assessment	December 2005
Surface Water Management Plans for Chippenham, Trowbridge and Salisbury	October 2011
Transport evidence	
Wiltshire LDF strategic transport assessment	April 2009
Salisbury transport strategy	January 2010
Chippenham, Trowbridge and Devizes traffic model and transport strategy	Anticipated
Base model update	October 2011
Scenario testing	November 2011
Transport strategy	September 2012

Community and stakeholder engagement

- 4.5. The Wiltshire Statement of Community Involvement was adopted February 2010. Since that time consultation has taken place in accordance with the

guidance that it contains. In preparing each stage of a DPD particular emphasis is placed on partnership working with organisations involved in the delivery and implementation of planning policies such as local economic partnerships, housing market partnerships and environmental partnerships.

- 4.6. Wiltshire Council has established a network of 18 community areas each based around a market town (or towns where they are closely related) and their hinterlands. Each community area has an area board (with the exception of the three community areas of Wilton, Mere and Tisbury which are collectively covered by the South West Wiltshire community area board), which meets to discuss local issues and, although led by elected Members of Wiltshire Council, are open to the public to contribute. They are an important vehicle for learning about local issues that should be addressed through the development of DPDs and SPDs and raising awareness about how local communities can get involved in the development of planning policy.
- 4.7. The overall plan for the preparation of individual DPDs (chart 1, above) indicates some of the key stages of the plan preparation process where stakeholders and the wider community will be engaged.

Sustainability appraisal

- 4.8. The development of DPDs and SPDs within Wiltshire will be informed by sustainability appraisal. This is an iterative process that develops alongside the preparation of a DPD or SPD through which the economic, social and environmental effects of the plan being prepared are assessed. It incorporates the requirements of Strategic Environmental Assessment as required by EU SEA Directive 2001/42.
- 4.9. Local authorities are also required to carry out Habitats Regulation Assessment as part of the planning process under the Habitats Directive. This work should also be carried out alongside DPD or SPD preparation to inform the policies and proposals they contain.

Resources - staffing

- 4.10. The Economy and Regeneration Service is responsible for the preparation of the LDF. Spatial planning officers work on a project basis to provide the resources to support the delivery of DPDs within the LDS from both within the service and in liaison with other council services (eg housing, sustainable transport, education, climate change).
- 4.11. In order to develop the relationship between the emerging Wiltshire core strategy and the Area Boards network, officers within spatial planning will develop their responsibility for planning matters in a designated Community Areas, working closely with the Area Boards.
- 4.12. A Service Level Agreement with Swindon Borough Council (SBC) is in place setting out joint working arrangements for minerals and waste planning matters. Under the terms of the Agreement, the Council will continue to act as 'Lead Authority', with SBC providing pro-rata support in terms of resources.

Resources - budgets

- 4.13. The cost of producing the LDDs within the LDS will be met from existing and

future service budgets.

- 4.14. Partnership working across the Council will be critical to the success of the LDF due to its crosscutting nature and relationship with other plans and strategies. Internal partners, for example, from key services such as housing, sustainable transport and education will be used to inform and develop the evidence base. This may include shared financial resources in order to produce studies /reports that are required by both services. Also, the knowledge and expertise of other service areas will be used to contribute to policy formation and validation of work undertaken at key stages. Finally, the Area Board network will be used wherever possible to support consultation events and there will be a close relationship with the Area Boards when work on neighbourhood planning begins. Resources from outside the service will therefore also contribute towards the preparation of LDDs.
- 4.15. Any opportunities to secure external funding and support in kind will also be exploited where they arise.

Risk assessment

- 4.16. A risk assessment has been prepared that will be monitored and reviewed during the LDS period by senior managers. The risk assessment includes proposed mitigation and contingency measures that may need to be implemented in order to ensure that sound DPDs are prepared and developed in a timely manner. Significant risks that have been highlighted include:
- Failure to produce a sound plan
 - Failure to secure consensus with members leading to key milestones being missed
 - Changes to legislation and regulations delaying the process
 - Lack of an appropriate and up-to-date evidence base
 - Insufficient resources (financial and staff) at critical points in the process
 - Lack of public engagement

Appendix A – Saved local plan policies and associated guidance

To be added

Appendix B – Document Profiles

LOCAL DEVELOPMENT DOCUMENT PROFILES	
Wiltshire Core Strategy (2006-2026)	
Role and subject	<p>The Wiltshire Core Strategy sets out the council's spatial vision, key objectives and overall principles for development in the county.</p> <p>The key objectives of the vision will be derived from an analysis of the county's characteristics, a review of the council's own corporate plans and priorities (for example the Sustainable Community Strategy) and national and, until revoked, regional planning policy / guidance. At its heart will be the delivery of viable and vibrant communities based on the principles of sustainability. It will prescribe a sustainable spatial strategy for future development in the County. In particular, it will describe the key principles that will govern future development within Wiltshire's Community Areas, identify the location of strategic sites for new housing and employment development, and set out policies with which planning applications will be judged.</p> <p>The core strategy will include a key diagram that displays the spatial aspects of the Strategy and include objectives and principles for the whole of Wiltshire, as well as, policies relating to specific locations within Wiltshire. The core strategy will also be split between a set of core policies and proposals for Wiltshire's Community Areas; and a set of policies suitable for development control purposes.</p>
Geographic coverage	Wiltshire
Document type/status	Development plan document
Chain of conformity	National policy and (until revoked) draft regional policy
Timetable	
Stage	Dates
Pre-production/survey/community engagement/informal consultation	September 2009 – August 2011
Preparation, evidence gathering and responding to comments	September - December 2011
Pre-submission consultation	February – March 2012
Processing of representations	April –May 2012
Submission to secretary of state	June 2012

Examination (including hearing and receipt of Inspector's report)	June - November 2012
Adoption	December 2012
Production and participation	
Lead Service	Economy and Enterprise
Other key Services	Sustainable Transport; Housing; Development Services; Regulatory Services; Community Safety; Amenities and Leisure; Major Projects; Adult Care: Strategy & Commissioning; Community Leadership & Support; Libraries Heritage & Arts; Schools; Children & Families, Resources, Improvements & Young People; Legal & Democratic Services and Performance & Risk.
External stakeholders	Infrastructure providers; central and local government agencies; adjoining local authorities; parish and town councils; developers; agents and key landowners; business support organisations; housing bodies; MoD; relevant national interest groups; relevant local interest groups; relevant charities; general public and residents associations and other groups within our community.
Political oversight	Cabinet of Wiltshire Council

LOCAL DEVELOPMENT DOCUMENT PROFILES	
Gypsy and Travellers Site Allocations DPD (2006-2016)	
Role and subject	<p>The Gypsy and Traveller Site Allocations document through assessment and consultation will make provision for sufficient additional pitches in Wiltshire to meet local need.</p> <p>The identification of sites to meet Gypsy and Traveller needs will include an appraisal of current sites, and investigation and consultation exercise about new sites. This will form a spatial plan formally identifying new sites and sites that will be expanded to meet the Gypsy and Traveller community's needs.</p> <p>The key objectives and principles of the DPD will need to adhere to national policy. The spatial vision will take into account the different needs of groups within the Gypsy and Traveller community and propose a number of sustainable sites that are to either be improved or developed to contribute to the overall success of Wiltshire. Gypsy and Traveller pitch allocations form part of the affordable housing provision in Wiltshire.</p>
Geographic coverage	Wiltshire
Document type/status	Development plan document

Chain of conformity	Wiltshire Core Strategy, national policy and (until revoked) draft regional
Timetable	
Stage	Dates
Preparation, evidence gathering, developing options	December 2011 - May 2012
Pre-submission consultation	September - October 2012
Processing of representations	November 2012 – June 2013
Submission to secretary of states	July 2013
Examination (including hearing and receipt of Inspector's report)	July - December 2013
Adoption	February 2014
Production and participation	
Lead Service	Economy and Enterprise
Other key Services	Traveller education service, Traveller liaison service, sustainable transport, Housing, Development, Regulatory Services, community safety, amenities and leisure, adult care: strategy & commissioning, community leadership & support, schools, children & families, resources, improvements & young people, legal & democratic services and performance & risk.
External stakeholders	Gypsy and traveller community; infrastructure providers, central and local government agencies; parish and town councils; developers, agents and key landowners; relevant national interest groups (eg Racial Equalities Council); relevant local interest groups (eg North and West Gypsy and Traveller Forum); adjoining local authorities, police.
Political oversight	Cabinet of Wiltshire Council

LOCAL DEVELOPMENT DOCUMENT PROFILES	
South Wiltshire Core Strategy	
Role and subject	The South Wiltshire Core Strategy sets out the Council's spatial vision, key objectives and overall principles for development in the former Salisbury District Council area for the period up to 2026. The key objectives of the vision have been derived from an analysis of the former District's characteristics, a review of the former District and County Council's own corporate plans and

	<p>priorities (for example the Sustainable Community Strategy) and national and regional planning guidance. At its heart is the delivery of viable and vibrant communities based on the principles of sustainability.</p> <p>The Core Strategy aims to balance the competing environmental, social, and economic pressures by prescribing a sustainable spatial strategy for the future development of South Wiltshire, this will include the location of strategic sites for new housing and employment development, as well as, policies with which planning applications will be judged.</p> <p>The Core Strategy will include a Key Diagram to show the spatial aspects of the Strategy and include objectives and principles for the whole of South Wiltshire, as well as, policies relating to specific locations within South Wiltshire.</p> <p>It will be a transitional document until the publication of the Wiltshire-wide Core Strategy which will supersede this document.</p>
Geographic coverage	South Wiltshire (former Salisbury district area)
Document type/status	Development plan document
Chain of conformity	National policy and (until revoked) draft regional policy
Timetable	
Stage	Dates
Examination (including hearing and receipt of Inspector's report)	August – October 2011
Adoption	February 2012
Production and participation	
Lead Service	Economy and Enterprise
Other key Services	Sustainable transport, housing, development management, regulatory services, community safety, amenities and leisure, adult care: strategy & commissioning, community leadership & support, schools, children & families, resources, improvements & young people, legal & democratic services and performance & risk.
External stakeholders	Infrastructure providers; central, and local government agencies; parish and town councils; developers, agents and key landowners; relevant national interest groups; relevant local interest groups; adjoining local authorities, police.
Political oversight	Cabinet of Wiltshire Council

LOCAL DEVELOPMENT DOCUMENT PROFILES	
Wiltshire & Swindon Waste Site Allocations (2010-2026)	
Role and subject	<p>The Waste Site Allocations document provides detailed local expression to the Waste Core Strategy in terms of formally identifying 'broad locations' for future waste management facilities for the period up to 2026.</p> <p>The document will share the same plan horizon as the Waste Core Strategy (i.e. 2026). However, as with all DPDs within the Wiltshire Local Development Framework, policies and proposals will be reviewed on a regular basis in line with published Monitoring and Implementation Plans and AMRs.</p>
Geographic coverage	Wiltshire Council and Swindon Borough
Document type/status	Development plan document
Chain of conformity	Wiltshire and Swindon Waste Core Strategy, national policy and (until revoked) draft regional policy
Timetable	
Stage	Dates
Pre-production/survey/community engagement (including site options consultation)	March 2005 – May 2011
Pre-submission consultation	June – August 2011
Processing of representations and submission to the secretary of state	September 2011– February 2012
Submission to secretary of state	February 2012
Examination (including hearing and receipt of Inspector's report)	February – July 2012
Adoption	November 2012
Production and participation	
Lead Service	<p>Economy and Enterprise *</p> <p><i>*Note: Wiltshire Council acts as 'Lead Authority' for the preparation of all Minerals and Waste LDDs, when prepared in partnership with Swindon Borough Council</i></p>
Other key Services	Sustainable transport, Housing, Development Management Services, community safety, amenities and leisure, adult care:

	strategy & commissioning, community leadership & support, schools, children & families, resources, improvements & young people, legal & democratic services and performance & risk. (including key departments within Swindon Borough Council)
External stakeholders	Infrastructure providers; central and local government agencies; adjoining strategic/local authorities; parish and town councils; developers, agents and key landowners; relevant national interest groups; relevant local interest groups; MoD; Wiltshire and Swindon Waste Forum.
Political oversight	Cabinet of Wiltshire Council; Cabinet of Swindon Borough Council

LOCAL DEVELOPMENT DOCUMENT PROFILES	
Wiltshire & Swindon Aggregate Minerals Site Allocations (2010-2026)	
Role and subject	<p>This document provides detailed local expression to the Minerals Core Strategy in terms of formally identifying land for future aggregate mineral working and aggregate recycling facilities.</p> <p>In terms of minerals supply, the key issue for Wiltshire and Swindon relates to the identification of land sufficient to reasonably test the environmental acceptability of meeting the local aggregates apportionment quanta. This testing process commences with the identification of 'broad locations' for new development in the Minerals Core Strategy and finishes with the identification and delivery of new (or expanded) sites.</p> <p>The document will share the same plan horizon as the Minerals Core Strategy (i.e. 2026). However, as with all DPDs within the Wiltshire Local Development Framework, policies and proposals will be reviewed on a regular basis in line with published Monitoring and Implementation Plans and AMRs.</p>
Geographic coverage	Wiltshire Council and Swindon Borough
Document type/status	Development plan document
Chain of conformity	Wiltshire and Swindon Minerals Core Strategy, national policy and (until revoked) draft regional policy
Timetable	
Stage	Dates
Preparation and evidence gathering (including site options appraisals, and informal consultation)	September 2009 – December 2011

Pre-submission consultation	February – March 2012
Processing of representations	April – June 2012
Submission to secretary of state	July 2012
Examination (including hearing and receipt of Inspector's report)	July - November 2012
Adoption	December 2012
Production and participation	
Lead Service	Economy and Enterprise * <i>*Note: Wiltshire Council acts as 'Lead Authority' for the preparation of all Minerals and Waste LDDs, when prepared in partnership with Swindon Borough Council</i>
Other key Services	Sustainable transport, Housing, Development, Regulatory Services, community safety, amenities and leisure, adult care: strategy & commissioning, community leadership & support, schools, children & families, resources, improvements & young people, legal & democratic services and performance & risk. (including key departments within Swindon Borough Council)
External stakeholders	Central and local government agencies; adjoining strategic/local authorities; parish and town councils; developers, agents and key landowners; relevant national interest groups; relevant local interest groups; MoD; Wiltshire and Swindon Minerals Forum.
Political oversight	Cabinet of Wiltshire Council; Cabinet of Swindon Borough Council

OTHER DOCUMENT PROFILES	
Community Infrastructure Levy	
Role and subject	The Community Infrastructure Levy (CIL) is a charge which local authorities in England and Wales are empowered, but not required, to charge on most types of new development in their area. CIL charges are based on simple formulae which relate the size of the charge to the size and character of the development paying it. The proceeds of the levy will be spent on local and sub-regional infrastructure to support the development of the area.
Geographic coverage	Wiltshire Council
Document type/status	Local development document

Chain of conformity	Wiltshire Core Strategy, Infrastructure Delivery Plan
Timetable	
Stage	Dates
Pre-production and evidence gathering /initial consultation	November 2011 – May 2012
Initial consultation	April – May 2012
Preparation, evidence gathering and responding to comments	June – September 2012
Pre-submission consultation	October - November 2012
Processing of representations	December 2012 – January 2013
Submission to secretary of state	February 2013
Examination (including hearing and receipt of Inspector's report)	February - June 2013
Adoption	July 2013
Production and participation	
Lead Services	Economy and Enterprise
Other key Services	Sustainable transport, Housing, Development, Regulatory Services, community safety, amenities and leisure, adult care: strategy & commissioning, community leadership & support, schools, children & families, resources, improvements & young people, legal & democratic services and performance & risk.
External stakeholders	Infrastructure providers; central and local government agencies; adjoining strategic/local authorities; parish and town councils; developers, agents and key landowners; relevant national interest groups; relevant local interest groups;
Political oversight	Cabinet and Capital Assets Committee of Wiltshire Council

GLOSSARY

A guide to the terminology used in this document

Annual Monitoring Report (AMR) - A report on how the Council is performing in terms of the Local Development Framework. It includes a review of the Local Development Scheme's timetable and monitors the success of development plan document policies.

Community Infrastructure Levy (CIL) – A charge levied by the Council on new development to fund the provision of infrastructure and wider community benefits. In order to charge the levy, the Council must have an adopted CIL Charging Schedule. By 2014, the CIL will be the primary mechanism for securing financial contributions from developers.

Community Infrastructure Levy Charging Schedule – A document that sets out the Council's proposals for securing funds from new development. The Charging Schedule must be based upon a robust evidence base (linked to the Infrastructure Delivery Plan and robust viability assessments) and subjected to meaningful consultation. The Schedule will be examined by an independently appointed assessor (generally the Planning Inspectorate); and if found sound, the Council can then charge CIL.

Core Strategy -This is one of the key development plan documents. It sets out the long term vision for the area, and provides the strategic policies and proposals to deliver that vision. The document relates to a wide range of development, but excludes minerals and waste matters.

Development Plan Document (DPD) - A document setting out the Council's planning policies and proposals. They are subject to community involvement, consultation and independent examination. A sustainability appraisal is required for each development plan document.

Local Development Document (LDD) - Any document within the Local Development Framework. They comprise development plan documents, supplementary plan documents and the statement of community involvement.

Local Development Framework (LDF) - This is the term given to the overall folder of local development documents (LDDs). Together the LDDs provide the Local Planning Authority's land use and spatial policies for the area.

Local Development Scheme (LDS) - A three year plan which shows the local development documents to be produced and the timetable for their production.

Planning Inspectorate (PINS) -The government agency responsible for scheduling independent examinations. The planning inspectors who sit on independent examinations are employed by PINs.

Planning Policy Statement (PPS)⁴ - A series of documents setting out the Government's national land use planning policies that will replace the previous Planning Policy Guidance notes.

⁴ The government are in the process of consulting on a national planning policy framework which will replace many, but not all, of these national planning policy statements and guidance.

Proposals Map -A separate Local Development Document which illustrates on an Ordnance Survey base map all the policies and proposals contained in the development plan documents (DPD) and 'saved' policies. It must be revised each time a DPD is submitted to the Secretary of State.

National Planning Policy Framework -

Neighbourhood Planning -

Regional Planning Guidance (RPG) – Originally drafted and adopted by the South West Planning Conference in 1999; and later updated and published by the Department of Transport Local Government and the Regions (DTLR) in 2001. It provides a regional spatial strategy within which Local Plans and Local Transport Plans should be prepared. To be replaced by Regional Strategies (otherwise known as Regional Spatial Strategies).

Regional Strategy (formerly known as Regional Spatial Strategy)⁵ Produced by the South West Regional Assembly. It forms part of the development plan and sets out the Government's policies for the region including the Regional Transport Strategy. It will replace RPG when finally published.

Saved Plan -Under the Planning and Compulsory Purchase Act 2004 Planning Act, adopted Local Plans have the status of "saved plans" until they are replaced by local development documents.

Saved Policies - The Government has set out procedures for saving adopted local plan policies beyond the period allowed in the Planning Act for saved Local Plans, until they have been replaced by policies in local development documents.

Spatial Planning - Includes economic, social and environmental issues as well as the physical aspects of location and land use.

Sustainability Appraisal (SA) - These are required under national legislation for emerging policy and include consideration of social & economic impacts as well as impacts on the environment. Wiltshire is producing a combined SA and Strategic Environmental Assessment (see below).

Statement of Community Involvement (SCI) – This is a document which sets out how the Council will consult and involve the public at every stage in the production of the Local Development Framework. It also applies to major development control applications. The SCI is not a development plan document.

Strategic Environmental Assessment (SEA) - An appraisal of the impacts of policies and proposals on economic, social and environmental issues, required by European legislation. A combined SEA and Sustainability Appraisal is being undertaken for Wiltshire.

⁵ The Localism Bill being considered by parliament if approved in its current form will change the definition of the development plan and remove reference to regional strategies.

Statutory development plan⁶ -Consists of the Regional Spatial Strategy and development plan documents. The starting point for the determination of planning applications. See 'saved policies' above also.

Supplementary Planning Document (SPD) -This is a local development document which provides additional advice and information relating to a specific policy or proposal in a development plan document (DPD). It does not have DPD status and will not be subject to independent examination.

Supplementary Planning Guidance (SPG) -Additional advice issued by the Local Planning Authority relating to policies in the adopted Local Plan. To be replaced by Supplementary Planning Documents (see above).

⁶ The Localism Bill being considered by parliament if approved in its current form will change the definition of the development plan and remove reference to regional strategies